



OAKLANDS CROSSING GRADE SEPARATION

OPENING OF THE NEW OAKLANDS RAILWAY STATION

FROM MONDAY 6 MAY

The project has been working 24/7 during the three-week rail closure to prepare the new Oaklands Railway Station for opening on Monday 6 May.

On Saturday 13 April at 12:24am, the last train travelled across Morphett Road and through the old Oaklands Railway Station. Since then, the project has removed overhead line equipment, rail track, sleepers, ballast, earth material and the old station.

Simultaneously, the project has installed new infrastructure. The first week of the closure saw the project complete the bulk earthworks, before moving onto installation of rail track and overhead line equipment. Works continue in the new station and the upgraded pedestrian and cyclist rail crossings at Hove, Warradale and Seventh Avenue.

How do I access the new station?

Whilst the new station will be open for public use, project works will continue in the area. Key works include old station removal, car park construction, roadworks, SA Water asset installations and landscaping.

Access points to and around the station will change as works progress. From Monday 6 May, access will be as per the *map overleaf*. Construction zones will be fenced off to ensure safety for the public and the construction crews.

Please note that from mid-May, the two-stage Morphett Road pedestrian crossing will be removed, to allow progress of roadworks. We will install signage prior to the closure.

Vehicle parking

From Monday 6 May, vehicle parking is available on Murray Terrace, Crozier Terrace, Railway Terrace and in the temporary car park next to Coles. The Kiss 'N' Drop on Murray Terrace will remain closed for station removal works. The toilet and bicycle storage will become available in mid-May, in the amenities building, just off Crozier Terrace.

With the removal of old rail track and the station, the project will soon start to build new car parks on Crozier and Railway terraces. We will advise commuters when these are ready for use.

Rail service timetables

Please call **1300 311 108** or visit <https://adelaidemetro.com.au/> for timetable details close to the time of opening.

More information

The project would like to thank the community and commuters for their patience during the occupation and we look forward to welcoming passengers to the new station.

For any questions regarding the works or access, please contact the project team **1300 205 994** or email oaklandscrossing@ptpa.com.au.



1300 205 994



oaklandscrossing@ptpa.com.au



ptpa.com.au/oaklands



Australian Government

BUILDING OUR FUTURE



Government
of South Australia

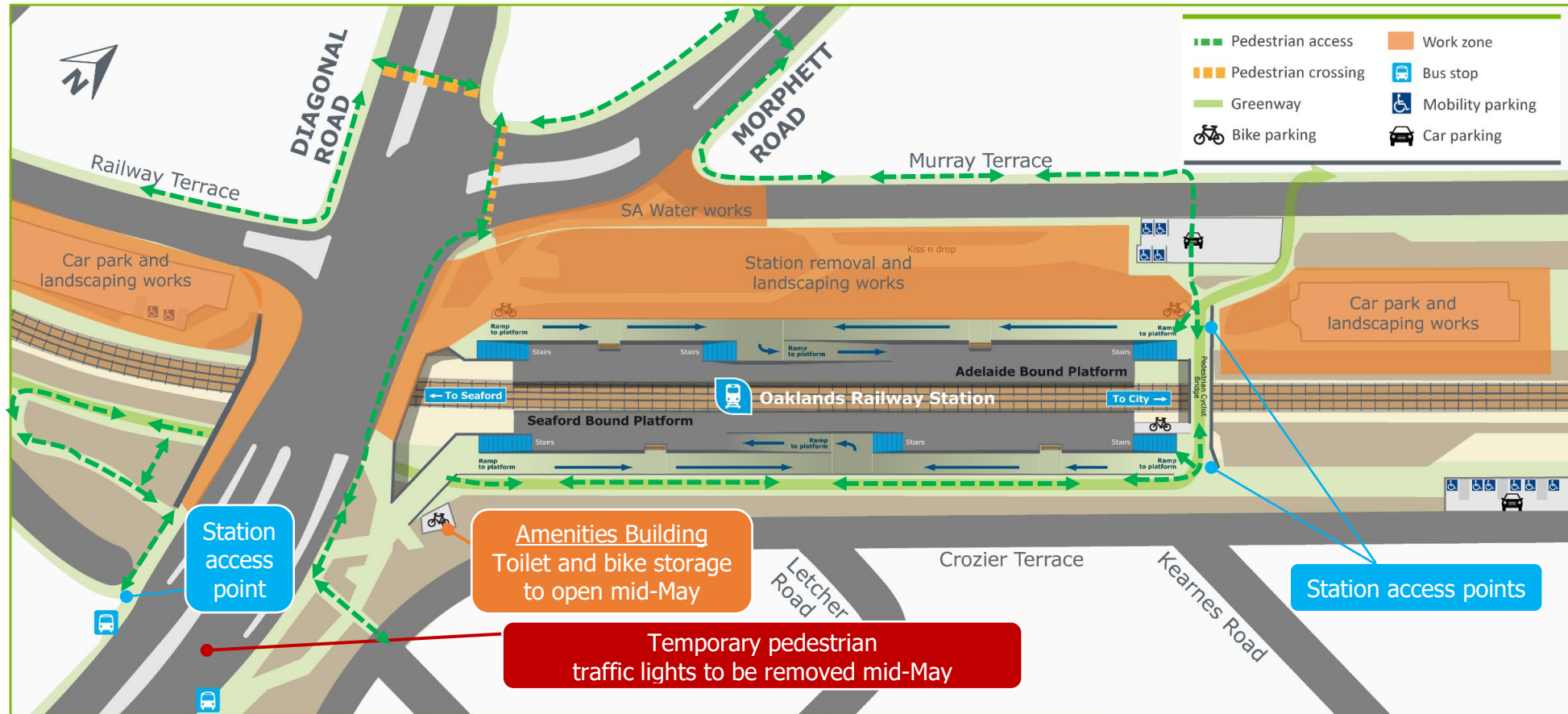
Department of Planning,
Transport and Infrastructure





OAKLANDS CROSSING GRADE SEPARATION

Access to and around the new Oaklands Railway Station from Monday 6 May



1300 205 994



oaklandscrossing@ptpa.com.au



ptpa.com.au/oaklands



Australian Government

BUILDING OUR FUTURE



Government
of South Australia

Department of Planning,
Transport and Infrastructure

