



OAKLANDS CROSSING GRADE SEPARATION

WORKS NOTIFICATION

PEDESTRIAN AND CYCLIST BRIDGE TEMPORARY CLOSURE

9AM MONDAY 29 APRIL – 5AM MONDAY 6 MAY 2019

To safely continue station demolition works, the project will temporarily close the pedestrian and cyclist bridge.

The bridge will be closed from 9:00am, Monday, 29 April until 5:00am, Monday, 6 May.

During this time, the pathway along Morphett Road will remain open to provide continued access. See map overleaf.

From Monday 6 May, the new Oaklands Railway Station will be open for use. Please visit <https://adelaidemetro.com.au/> for timetable details closer to the time.

For any questions and further information - please contact the project team using the details below.

More information

Information for substitute bus stops for each railway station and timetable changes will be available on the Adelaide Metro website <https://adelaidemetro.com.au/>.



1300 205 994



oaklandscrossing@ptpa.com.au



ptpa.com.au/oaklands



Australian Government

BUILDING OUR FUTURE



Government
of South Australia

Department of Planning,
Transport and Infrastructure

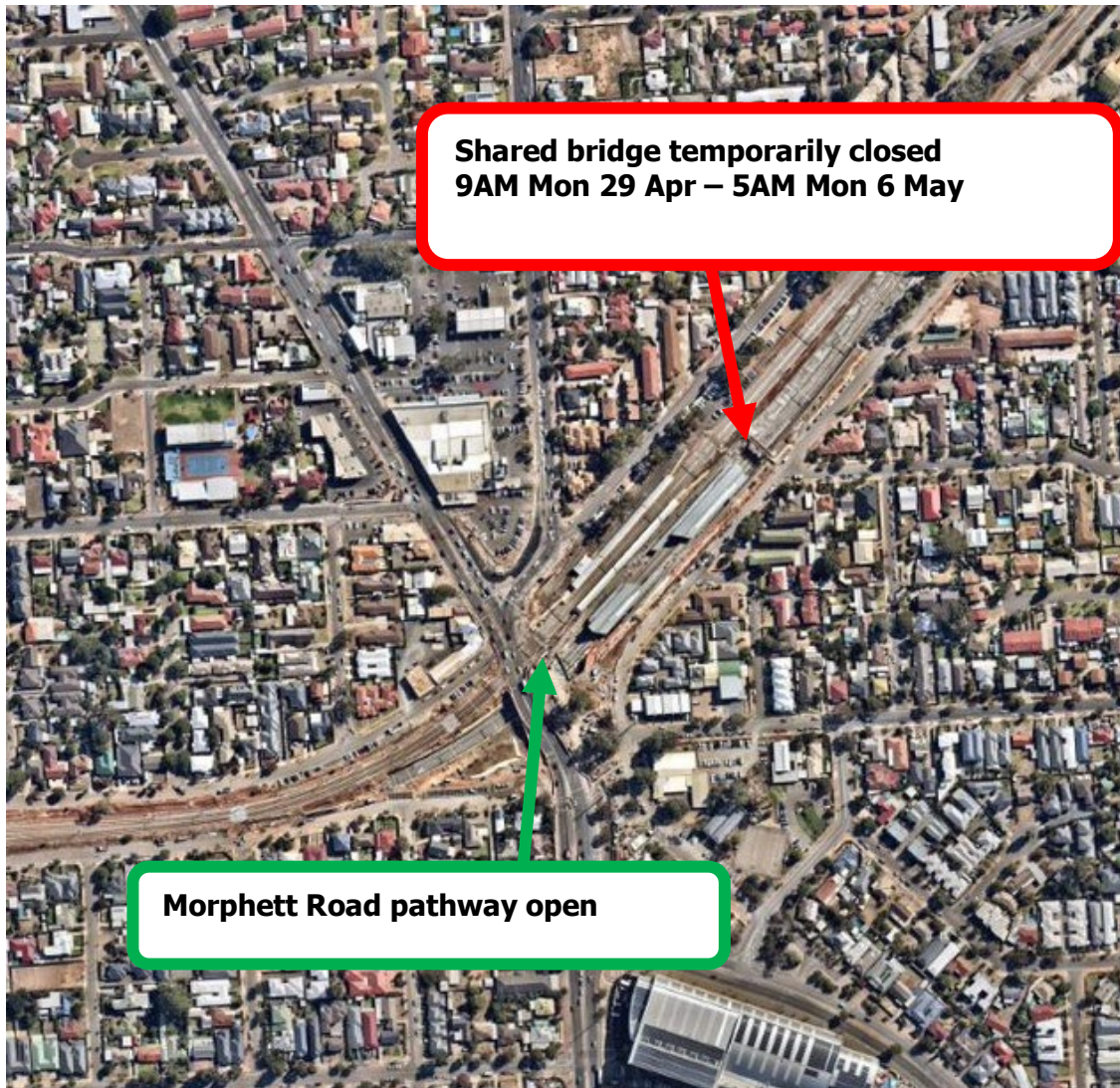


CITY OF

MARION



OAKLANDS CROSSING GRADE SEPARATION



*Pedestrian and cyclist access 9:00am, Monday, 29 April
to 5:00am, Monday, 6 May 2019*



1300 205 994



oaklandscrossing@ptpa.com.au



ptpa.com.au/oaklands



Australian Government

BUILDING OUR FUTURE



Government
of South Australia

Department of Planning,
Transport and Infrastructure

