



Artist impression only with vegetation shown at maturity



PTP
ALLIANCE

PARADISE PARK 'N' RIDE

PROJECT NEWSLETTER – December 2019

The State Government is investing in a better public transport network and is committed to delivering increased connectivity, faster and more reliable travel options and increased use of public transport.

O-Bahn buses are the most popular public transport services in Adelaide, carrying more passengers on an average weekday than the most popular rail services.

The State Government has allocated \$33.5 million to expand O-Bahn Park 'n' Rides.

The aim of the project is to meet demand for the Park 'n' Ride and increase public transport usage.

Increasing parking spaces

The Paradise Park 'n' Ride currently has 458 ground-level off-street parking spaces to service commuters accessing the Paradise Interchange.

The concept design proposes to increase the number of car parking spaces from 458 to 818 (including nine *Disability Discrimination Act 1992 (DDA)* compliant car parks), an increase of 360 car parking spaces. In addition, provision has been made for 20 motorcycle and 32 bicycle parking spaces.

The new single level (ground and first floor) car park will be constructed over the existing car park site on Gameau

Road, with a further at-grade car park constructed on the eastern portion of the site (adjacent Darley Road).

Car parking during construction

While the **Gameau Road car park will be closed for the duration of construction**, the vast majority of parking will be maintained at the Paradise Park 'n' Ride, including the Darley Road car park, as well as nearby on-street parking.

Timelines

The new car park design has been approved by the State Commission Assessment Panel.

Major works are expected to start this year, with project completion anticipated by the end of 2020, weather permitting.

Community engagement

Community engagement is an important part of the project during both design and construction phases. We are committed to providing regular communication on the project to keep you up to date with construction works that may affect you

Early input was sought from the local community and stakeholders on the project, which has resulted in some design changes, including improved access between Darley Road and Gameau Road and the minor adjustment of the site layout to protect some significant trees.

 1300 705 992

 paradiseparknride@ptpa.com.au

 ptpa.com.au/paradiseparknride



Government of South Australia

Department of Planning,
Transport and Infrastructure

The community will have a further opportunity to work closely with the project team as part of the Community Wildlife Project. This project is a Department of Planning, Transport and Infrastructure initiative that involves local communities in helping to offset the loss of habitat caused by necessary vegetation removals. For further information please see details below.

The project team will be visiting residents living near the Park 'n' Ride to update them on the approved design and to discuss the timing of construction and preferred communication methods. We will also be providing information to O-Bahn users at the Paradise Interchange.

Amenity and urban design

The project team has considered a range of factors in preparing the design, including:

- maximising the number of new parking spaces;
- minimising impacts on trees and vegetation;
- maintaining safe and efficient bus operations;
- responding to the local urban character and built form; and
- enhancing pedestrian and bicycle user access.

Tree-planting, landscaping and buffer zones will be provided around the new car parking to maintain the green amenity of the Park 'n' Ride and provide shade and fauna habitat.

Access for pedestrians and cyclists during construction

The new car parks located on either side of the bus access/egress from Gameau Road will be constructed simultaneously.

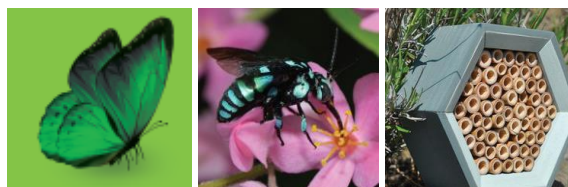
While access for bus services will not be affected by the works, pedestrian access to the Paradise Interchange will only be available next to the western end of the Gameau Road work site during construction. Wayfinding signage will be provided to guide pedestrians and cyclists.

Community Wildlife Project

To increase habitat in the local area and to offset the necessary removal of vegetation, the PTP Alliance will be implementing a Community Wildlife Project. If you are interested in being involved and learning more about how the project team will be working to increase local habitat, please register your interest to be involved.

The Community Wildlife Project will include building, installing and monitoring bird boxes, butterfly gardens and native bee hotels throughout the local area. It will provide educational and networking opportunities with local schools, community groups, residents and Paradise Interchange users via participation in workshops and ongoing public monitoring, which will inform research on the health of the local ecosystem.

For further information please visit the project website to download a copy of the Vegetation and Community Wildlife Project Fact Sheet.



For information about other local habitat projects visit:

- <https://butterflyconservationsa.net.au/>
- Checkout: <https://www.aussiebee.com.au/>
- Be involved: <https://www.ala.org.au/biocollect/>

Project construction

Construction works will commence this year with the first activities including: site office establishment, fencing of the site, vegetation removal and underground service relocation works.

Every effort will be made to minimise impacts to nearby residents, O-Bahn users, cyclists, pedestrians and other road users as much as practically possible during construction.

The majority of construction works are expected to be undertaken Monday to Saturday, between the hours of 7am and 5pm.

Residents will be notified ahead of any works required outside of these hours.

Construction works will also cease over the Christmas holiday period, with the last day of work for 2019 finishing on Friday, 20 December and recommencing on Monday, 6 January, 2020.

More information

To find out more about the Paradise Park 'n' Ride Project and to register for future email updates, please contact the project team on the details provided below.

 1300 705 992

 paradiseparknride@ptpa.com.au

 ptpa.com.au/paradiseparknride



Government of South Australia
Department of Planning,
Transport and Infrastructure